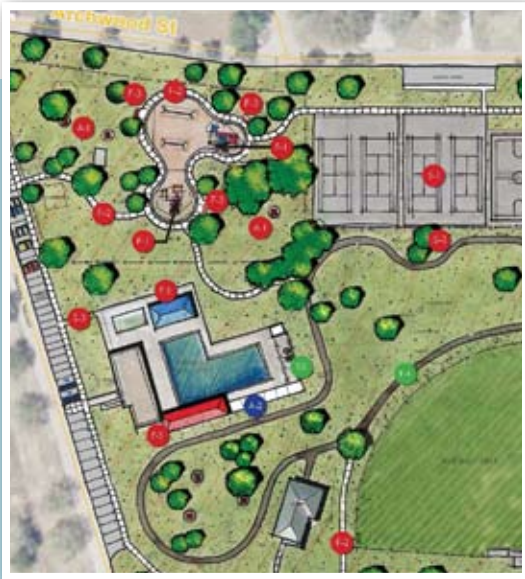


Lake Charles Seven Parks Project

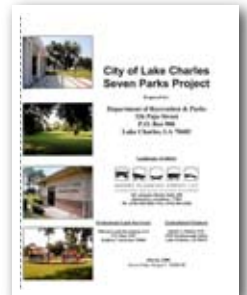
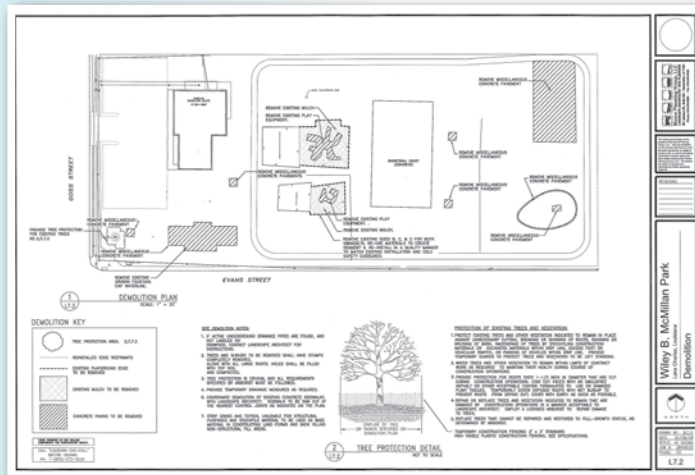


The City of Lake Charles is fortunate to have over 36 parks and playgrounds within its limits. The City Council agreed to focus attention to one (1) park in each of the city's seven (7) districts. These seven recreation facilities provide the citizens of Lake Charles with many opportunities for leisure activities, sports, and exercise. Moore Planning Group was hired to perform and implement the assessment of each of the 7 parks and provide recommendations for each. First, Moore Planning Group conducted an analysis to determine the conditions of each park. Each element of each park was run through a decision making matrix using safety, function, and aesthetics as its guiding principles. Included in this study was the creation of multiple conceptual master plans for the possible sites that incorporated the desired programming for each park. The concepts were evaluated and ultimately a public preference for the preferred site and concept was attained.



Moore Planning Group provided analysis, programming, concept, design development, schematic design, and construction documents for the Seven Parks project. Each park is scheduled to receive amenities such as benches, litter receptacles, overhead shade canopies, new sidewalks, ADA access, new playgrounds, and other miscellaneous improvements. The product of the matrix exercise determined where the amenities were necessary in order to make the parks safer, more functional, and aesthetically pleasing.

Bids will be received in late May 2008 with construction expected to begin shortly thereafter.



Client: Randy Roach, Mayor
City of Lake Charles
(337) 491-1280

Project End Date: 2008
Construction Budget: \$1.75MM

Moore Planning Group, LLC
Alexandria / Baton Rouge, LA
(318) 445-2825 / (225) 346-6850
www.mooreplanninggroup.com