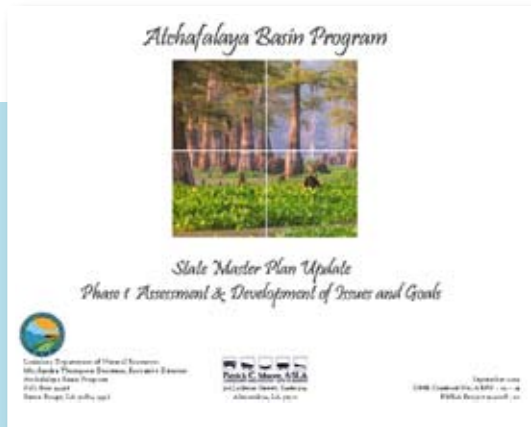


Atchafalaya Basin Master Plan Assessment



The Atchafalaya Basin is an enormous asset to the southeastern US - an ecosystem so rich in resources and living organisms that it has come to represent and symbolize the life of Louisiana. In Louisiana, the basin is regarded not only as a place to grow up and play, but for many, it is their livelihood and home. It is also the basis for a significant part of Louisiana culture and history. On the national level, the basin is a crucial drainage conduit providing flood relief for rivers that drain 2/3 of the continental US, as well as being the largest repository of freshwater forest in the nation. Louisiana acknowledges the cultural and economic impact of the Atchafalaya Basin set the goal of heightening regional and national awareness of the basin.

Moore Planning Group, LLC was contracted to perform an assessment of the Atchafalaya Basin Program's existing Master Plan and to develop the goals and scope of work for the Atchafalaya Basin Program Master Plan Update. To accomplish this, MPG analyzed the existing plan and current planning and financial guidelines. MPG then conducted review workshops and attended parish meetings and tours to research the Atchafalaya Basin Program's current functions and processes.

The resulting scope of work developed by MPG outlines the tasks needed to attain the goals of the Atchafalaya Basin Program. The tasks are divided into three phases of work including:

- Phase I - Assessment of existing programs and processes
 - Inventory and assessment of study area
 - Establishment of planning/design priorities
- Phase II - Database Development and analysis
 - Planning coordination and capacity building
 - Initiation of Pilot Projects
- Phase III - Atchafalaya Basin Program Master Plan development
 - Planning, Design and Funding guidelines
 - Initiation of Auxillary Plans

These master plan will assist the ABP in prioritizing and managing projects, and maintaining the quality and continuity of efforts on the regional scale.



Client: Atchafalaya Basin Program
 Contact: David Fruge
 Executive Director
 Baton Rouge, LA 70804
 (225) 342 -0560

Moore Planning Group, LLC
 Alexandria / Baton Rouge, LA
 (318) 445-2825 / (225) 346-6850
www.mooreplanninggroup.com